

# Installation Instruction

## Before You Begin

---

1. Shut off the main water supply.
2. Do not disassemble the main body, as it has been installed & commissioned correctly & precisely before leaving the factory.
3. To avoid the faucet from jamming, DO flush the water pipe before installation.
4. After installation, make sure every joint is safely sealed (NO LEAKAGE).
5. Make sure to connect the hot/cold inlet pipe correctly, if standing in front, hot water pipe connecting to the left and cold water pipe connecting to the right.
6. It is recommended that installation of the product be done by a professional plumber.

## Cleaning & Maintenance

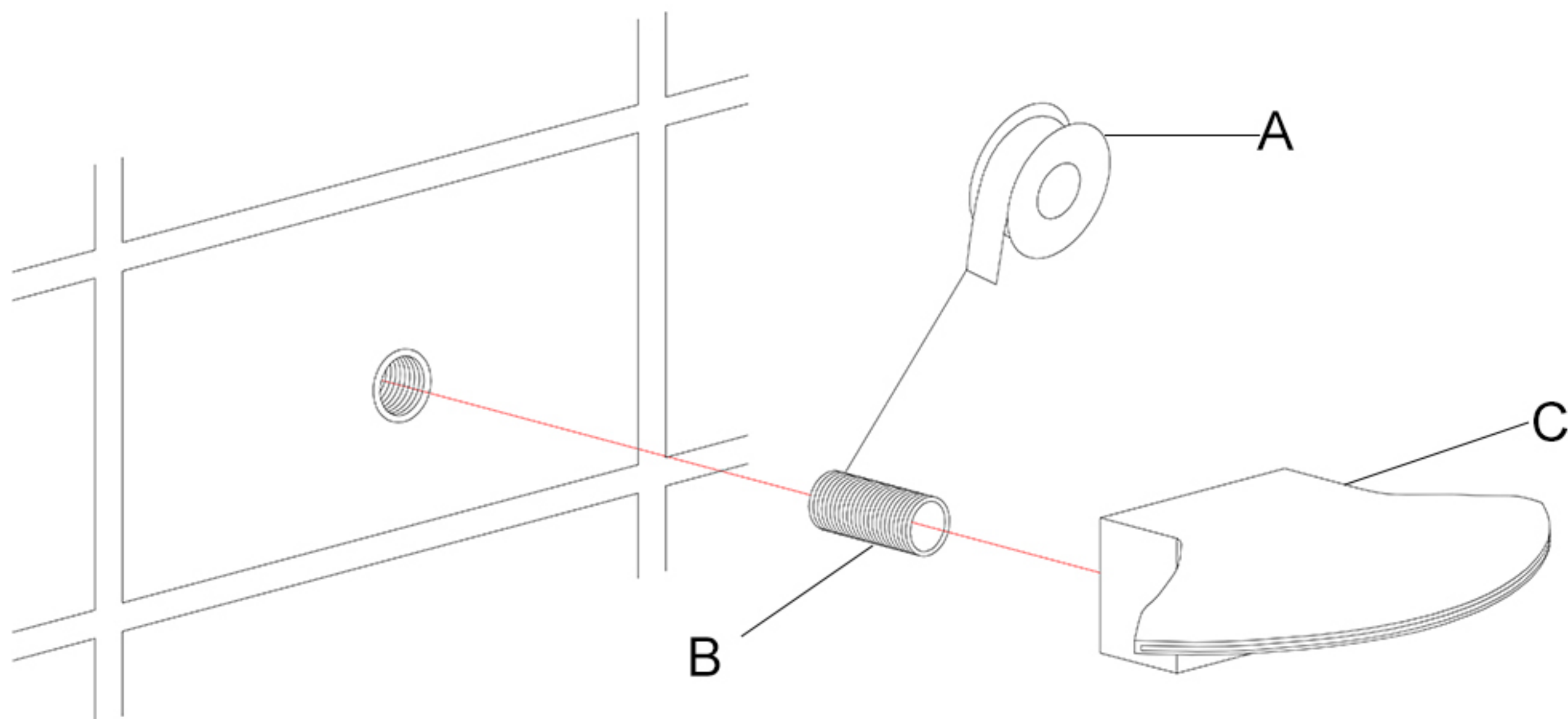
---

To keep product clean and shiny follow the instruction below.

1. Flush with clean water and dry with soft cloth only.
2. Do not use any detergent, polisher, sane-cloth, or a scraper.
3. Do not use acid detergent.

## Installation

---



1. Screw the threaded pipe (B) into the spout (C).
2. Wrap the thread pipe (B) of the spout body (C) with teflon tape (A).
3. Screw the spout body (C) into the female fitting in the wall. Make sure that the spout body (C) is level.